

NOTES

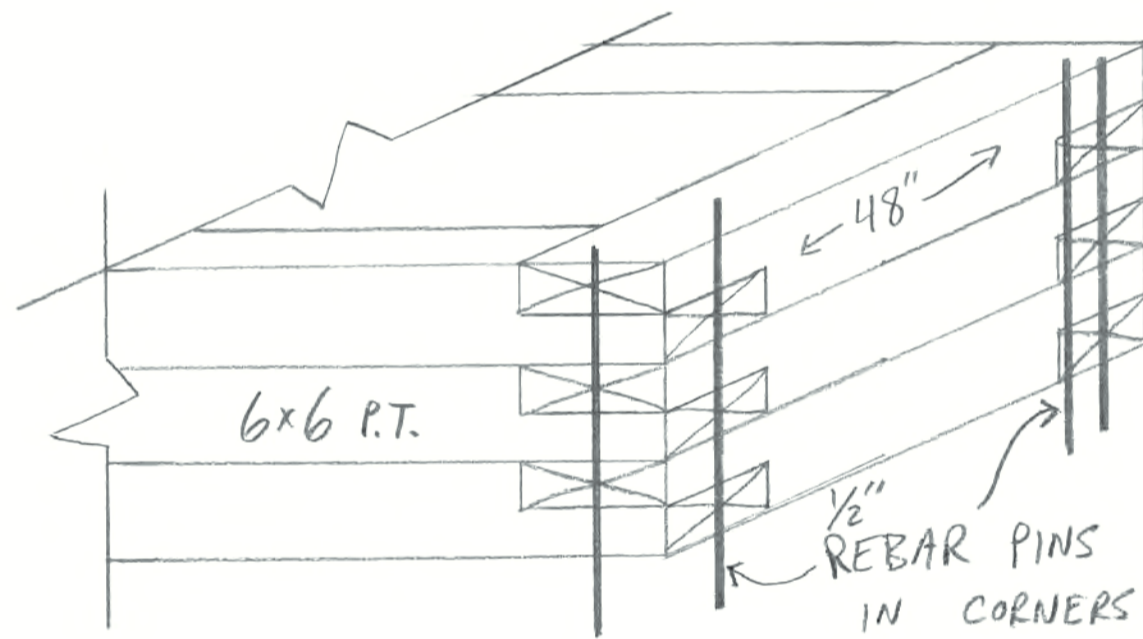
- FENCE -**
4' HI BLACK ALUMINUM FENCE + 4' W GATE
- ENTRANCE PERGOLA -**
8'x10' SHADE STRUCTURE
STAINED PRESSURE TREATED LUMBER
LATTICE ON 8' SIDES
- STORAGE SHED -**
PAINTED, GENERAL CONSTRUCTION
7'x14' OVERALL. SPLIT INTO TWO SECTIONS
- COVERED SLAB -**
EXISTING 14'x20' ROOF
PAINTED/STAINED, PRESSURE TREATED LUMBER, CLOSED PLYWOOD CEILING
- BLEACHERS -**
COMPOSITE DECKING, PRESSURE TREATED FRAME, PVC SIDE WRAP
EACH STEP 2" DEEP X 12" HIGH
COMPOSITE RAILING
SHADE CLOTH OVERHEAD
- PAVERS -**
CONCRETE SEGMENTED PAVERS, MINIMUM 4' WIDE WALKWAYS W/ POLYMERIC SAND
- - 8" SEWER CLEAN-OUT CAPS
- - POWDER COATED METAL CLIPBOARD STANDS

PLANTS

- BJM Bloodgood Japanese Maple
- TP Tulip Poplar
- J.MAG Jane Magnolia
- BB Butterfly Bush
- M Maple - Assorted
- BN Bamboo Nandina
- A Azalea - Assorted
- LH Limelight Hydrangea
- Assorted PERENNIALS**
DL - Daylily G - GRASSES
H - HOSTA S - SEDUM
I - IRIS
C - CLEMATIS
- KA Kaleidoscope Abelia
- GSN Gulf Stream Nandina
- DFN Dwarf Firepower Nandina
- ARB Emerald Green Arborvitae
- W Weigela - Assorted
- GM Gold Map Cypress
- ROS Rose of Sharon
- LP Loropetalum - 'Red Ruby' or 'Pizzazz'
- J Juniper - 'Blue Rug'

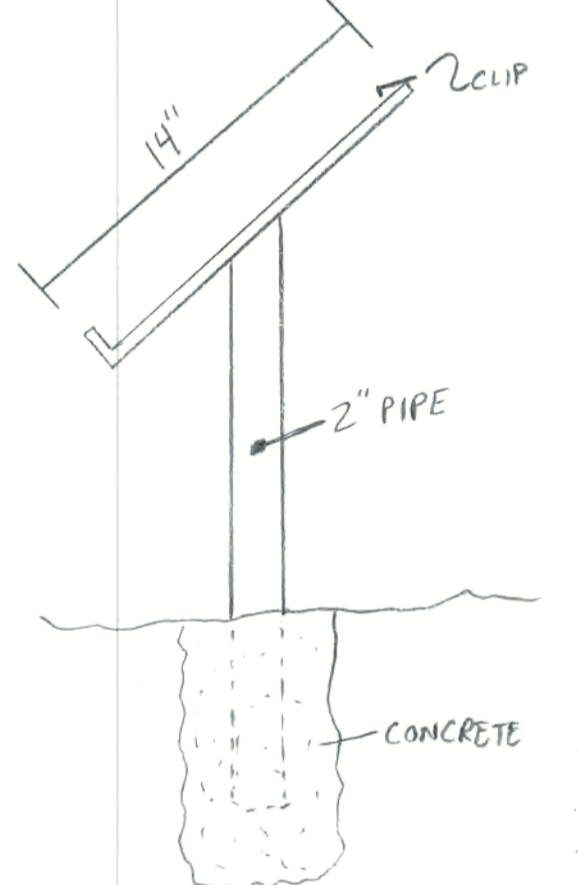
RAISED PLANTER BEDS

8' or 10' WIDE X 4' LONG X 3 ROWS HIGH
FILLED W/ TOP SOIL

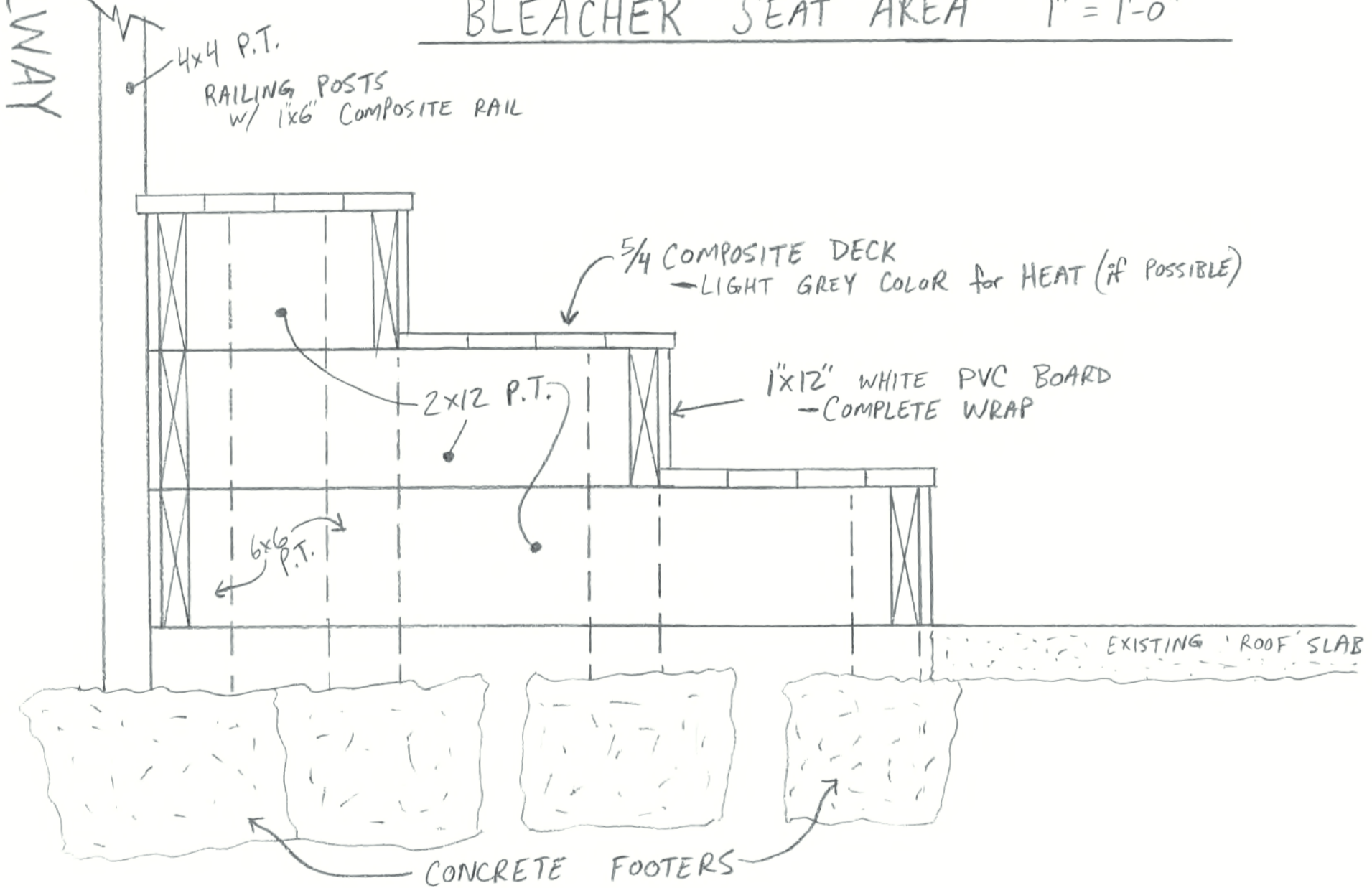


CLIPBOARD STAND

14" TALL X 12" WIDE
INSTALLED AT VARIOUS HEIGHTS, 24" TO 36" HIGH



BLEACHER SEAT AREA 1" = 1'-0"



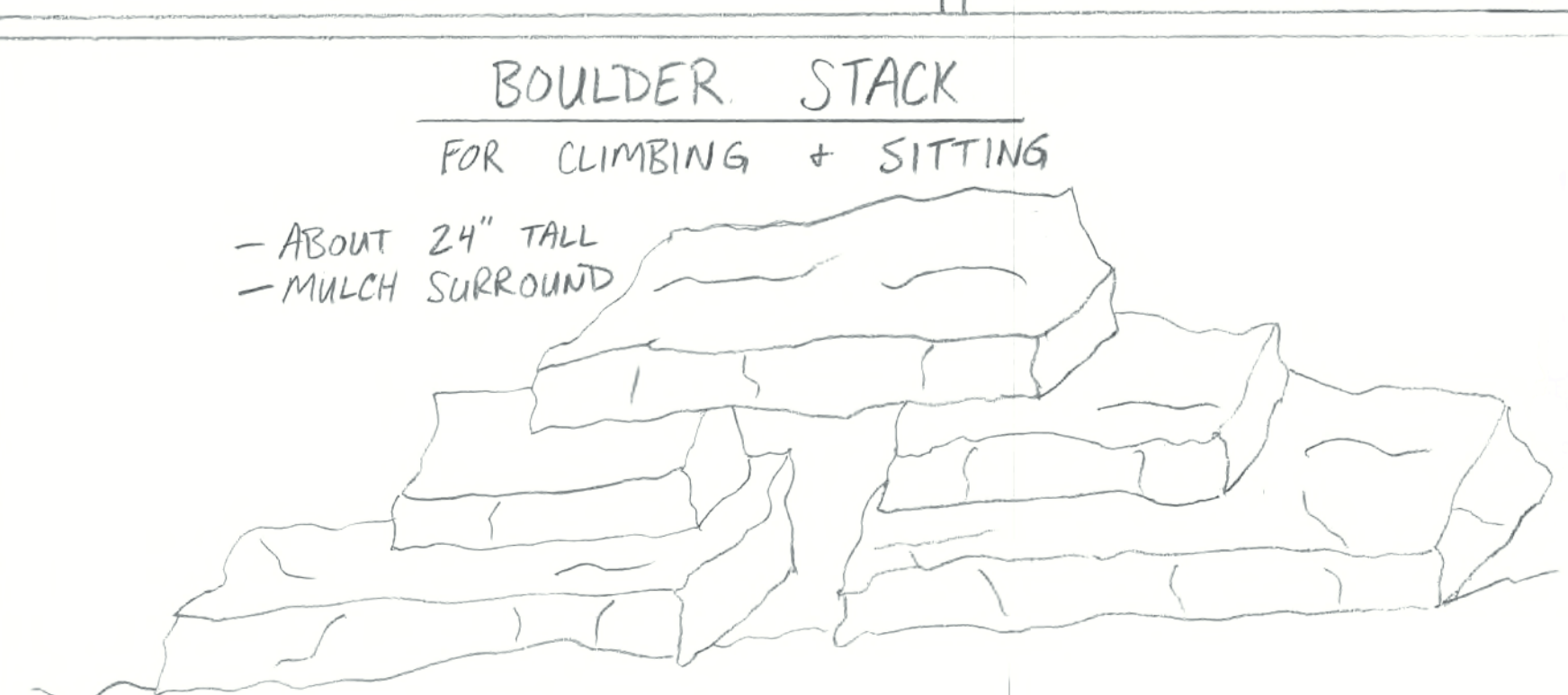
STUMP SEATING

12" TO 18" DIAMETER + HEIGHT



BOULDER SEATING

2'-3' WIDE, 12" TO 18" TALL
- SEMI FLAT TOP
- MULCH SURROUND



SEE ATTACHMENTS:

- PIZZA PLANTER
- WEATHER STATION
- MUSIC WALL
- CHIMES / XYLOPHONE
- ABACUS
- LOG BENCH AREA
- WOOD BENCH